









LIGHTING STAND

483T 3 SCT Wind-Up Stand w/Auto Self-Locking device

 181cm 71.3"	 380cm 149.7"	 22.4kg 49.4lbs
 128cm 50.4"	 30kg 66.1lbs	 KC-100



3 sections.

Dia.: 55mm, 45mm, 38mm

Leg dia.: 30mm

Chrome plated steel stand
w/geared column.

2 risers extend simultaneously at one
elevation of 4.4cm per handle turn.

Safety cable ensures simultaneous
retrieval of all sections.

With 1 leveling leg

Auto Self-Locking device
stop unexpected drop-off,
and make operation safer.
(PAT.ZL2006201577133.0)

Lock position

The safety pin will auto
insert to the holey tube
when wind-up.



Unlock position

The inside spring will bring
the safety pin back.

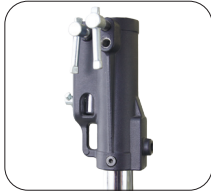




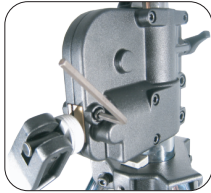
LIGHTING STAND

Features of Wind-up stand :

The stand top mounted by a steel bolt through the top tube that offers most sturdy and solid assembly.



The tension of break shoe can be adjusted with Allen wrench.



To prevent the tube falling off rapidly, the wind-up handle should be inserted in between center pole and legs.



Velcro is supplied to fasten the legs for better storage and transportation.



OPTIONAL ACCESSORY
KS-056 LATERN BAR 6 x lantern T Bar
1420mm long with Dia. 28mm stud



483-BP Base Plate

Set for three available with 481,482, 483T, 470 stands



Leveling legs should be set into horizontal at leaning location.



Bright color warning sticker for safety operation.



Top section tube can be adjusted by stepping on foot step.



Casters are optional for easily moving the stand. The stand foot is rugged zinc-casting. Dia.: 100mm with brake and M10 attachment. A set is for three (KC-100).





LIGHTING STAND

482T 2 SECTIONS WIND UP STAND

CHROME PLATED STEEL STAND WITH GEARED COLUMN

Elevation: 2.2mm per handle turn,
2 Sections, Dia.: 55, 45mm, 1 Riser, Leg Dia.
30mm, One leveling leg

L 165cm **H_{max}** 245cm **W** 18.5KG
⚙️ 128mm **↓_{max}** 45KG **T** 28mm

481 Wind-up Followspot Stand

CHROME PLATED STEEL STAND WITH GEARED COLUMN

Elevation: 2.2mm per handle turn,
2 Sections, Dia.: 55, 45mm
1 Riser, Leg Dia. 30mm, One leveling leg,
with auto-lock

L 110cm **H_{max}** 145cm **W** 13.5KG
⚙️ 110cm **↓_{max}** 50KG **T** 28mm



▲ Lock position

The safety pin will auto insert to the hole tube when wind-up.



▼ Unlock position

The inside spring will bring the safety pin back.



OPTIONAL ACCESSORIES
KC-100 CASTER
Dia. 80mm w/brake, Set for three



KS-056 LATERN BAR
6 x lantern T Bar
1420mm long with; Dia. 28mm stud



LIGHTING STAND

470 FOLLOWSPOT STAND

CHROME PLATED STEEL CENTERPOST
1 Riser, 2 Sections, Dia.: 40, 50mm
Leg Dia. 30mm, One leveling leg, Memory collar

L 109cm **H** 147cm **W** 8.70KG
F 110cm **↓** 40KG **T** 28mm



226M MASTER COMBO HD STAND

CHROME PLATED STEEL STAND
3 Sections, DIA.: 40, 35, 30mm
2 Riser, Leg DIA. 22mm with leveling leg,
spring cushioned

L 132cm **H** 338cm **W** 9.15KG
F 132cm **↓** 40KG **T** 28mm



OPTIONAL ACCESSORIES
KC-100 CASTER FOR 470 STAND
Dia. 100mm w/brake, Set for three



KS-080 FOR 470 STAND
Ball Race M10 stud
KS-082 FOR 470 STAND
Ball Race M12 stud



OPTIONAL ACCESSORIES
KC-080R CASTER FOR 226M STAND
Dia. 80mm w/brake, Set for three



KS-040 FOR 470 STAND
28mm Pin w/M10 thread & Dia.12cm plate
KS-042 FOR 470 STAND
28mm Pin w/M12 thread & Dia.12cm plate

SANDBAG

Kupo sand bag is constructed from denier polyester canvas. It can be filled with sand or anything else to secure the light stand. Each side of the bag has a hand strap, butterfly handle and center handle, using a box pattern to ensure a durable attachment. The sandbag is shipped empty for convenience and economy, and available in 15, 25, 35 pounds.

Item number:

- KSD-1680A Sand bag 15 pounds
- KSD-1680B Sand bag 25 pounds
- KSD-1680C Sand bag 35 pounds

Butterfly Handle





LIGHTING STAND

484 HEAVY DUTY WIND-UP STAND

3 Sections, DIA.: 70mm, 60mm, 50mm

2 Risers extend simultaneously at one elevation of 4.4cm per handle turn

Leg DIA.: 35mm With 1 leveling leg

Center tube & legs: Stainless steel

Top 2 sections: Chrome plated steel

With Auto Self-Locking Device

L 196cm **H** 386cm **W** 39kg

h 180cm **↓** 80kg **T** 28mm



▲ 28mm socket with 3 side holes for wind bracing kit

▼ Auto Self-Locking device stop unexpected drop-off and make operation safer



➤ Lock position

The safety pin will auto insert to the holey tube when wind-up.

Unlock position ◀

The insdie spring will bring the safety pin back.



Solid and strong handle with slip-free design offer excellent operation.



Larger foot step with skidproof texture design



U shape structs is made by stainless steel material. It is strong and stable



6" casters with the brake and M12 attachment. Take off the casters, the legs still can stand on the floor