

ACENTO line is a wide range of stage lighting equipments offering powerful high intensity lighting, style, robust mechanical construction, ease of operation and maximum safety.

Acanto Zoom Profiles and Ellipsoidals are high performance zoom optics suitable for small, mid-size and large venues, from 650w, 1200w to 2000w, for long, medium and short throw.

- Profiles double condenser lenses and glass reflectors.
- Ellipsoidals using dichroic coated glass reflectors.
- For theatres, concert halls, touring.
- High performance Zoom optics.
- Fast focusing system.
- Rotatable shutter gate with four shutters.
- Easy access for lens cleaning.
- All Profiles and Ellipsoidals supplied with color frame and pattern holders.

ACENTO PROFILE ZOOM 1000w/1200w 18/36°

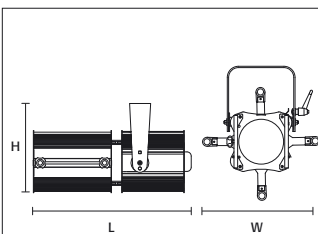
Model 50-23



- Double condenser lenses
- Glass reflector
- Throw 20mts
- Beam angle 18° - 36°

LAMPS

LIFE COD.	ANSI COD.	W	V	BASE
T19 / T11	FWP / FWR	1000	230	Gx9.5
CP/70	FVA	1000	230	Gx9.5
T29	FWS / FWT	1200	230	Gx9.5
CP/90		1200	230	Gx9.5
Q1000T8/CL	GE29331	1000	120	Gx9.5



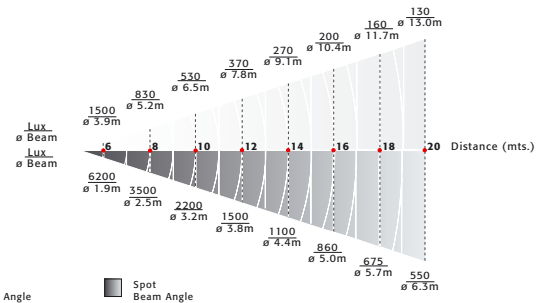
ACENTO PROFILE ZOOM 1000w/1200w 18/36°

L	680mm. (26.77")
W	320mm. (12.60")
H	440mm. (17.32")
	12.5kg. (27.11 Lbs.)
	400x400x300mm. (15.75"x15.75"x19.70")

- These equipments comply with all applicable European directives and safety standards



PHOTOMETRIC DATA



SUPPLIED WITH:

- Color frame
- Four beam shutters
- Gobo holder
- Quick access for lamp replacement
- Double microswitch interlock for safe relamping
- Easy access for lens cleaning
- GY9.5 lampholder
- 1.5m power supply cable

ACCESSORIES Acento Profile

